

ROCKET BATTERY

ROCKET ES & ESC Battery

- Uninterruptable Power Supply
- Communication Exchange Transfer System
- Solar Energy System
- Broadcast & Television System
- Mobile Communication System
- Emergency Lighting System
- Navigation Signal System



Sealed Maintenance - Free
 Valve Regulated Lead - Acid Battery

ROCKET

INTRODUCTION

INTRODUCTION

The most advanced technology of Rocket, Valve Regulated Lead Acid batteries make them highly useful in a broad range of application. Absorptive glassmat separators are used in these batteries. The use of high-purity calcium alloy maximises the longevity of ROCKET batteries. So you will be assured with ROCKET batteries excellent performance in any circumstance.

ESC Series are specially designed to provide better cyclic life and are ideally suited for areas prone to frequent power failures.

The unique construction coupled with the use of special sealing epoxies and long sealing paths of ROCKET series ensures that no electrolyte leakage can occur from terminals or cases of any ROCKET Batteries. This feature ensures safe & efficient operation of ROCKET batteries in any position.

ROCKET Batteries have excellent Deep Discharge Recovery and Charge Acceptance even after deep or prolonged discharge.

TECHNICAL FEATURES

- Non-Spillable Sealed Construction
- Absorptive Glass Mat System (AGM System)
- ABS (Acrylonitrile Butadiene Styrene) container and cover
- Gas Recombination
- Maintenance-Free Operation
- Low Pressure Venting System
- Heavy-Duty Grids
- Low Self-Discharge - Long Shelf Life
- Wide Operating Temperature Range
- High Recovery Capability

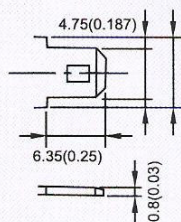
DESIGNED LIFE :

- ES Series Designed for float life of 6 years at an ambient temperature of 20°C / 68°F.
- ESC Series Designed for float life of 10 years at an ambient temperature of 20°C / 68°F.

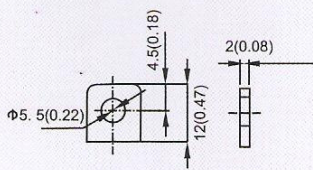
MAIN APPLICATIONS

- UPS Systems
- Telecom Communication Equipments
- Fire Alarm & Security Systems
- Medical Instruments
- Emergency Lighting
- Computer Backup
- Solar Powered Systems

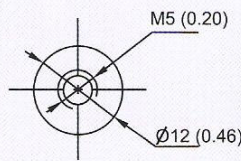
TERMINAL



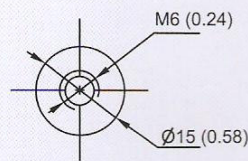
FP - 01



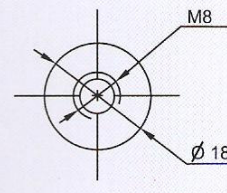
FP - 02



RT - 01



RT - 02



RT - 03

SPECIFICATIONS OF ES BATTERIES

SPECIFICATIONS OF ES BATTERIES

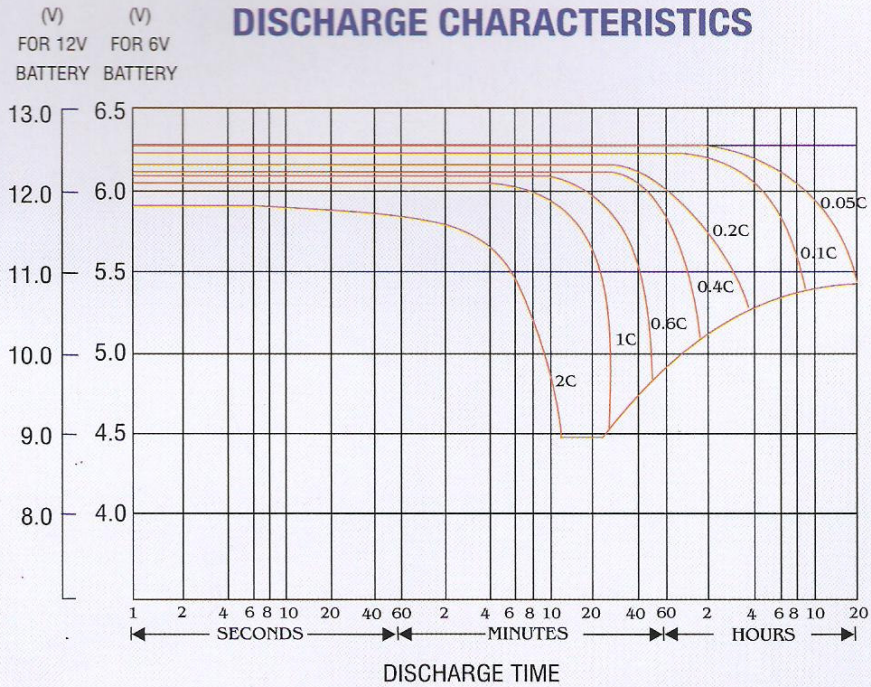
BATTERY Type	Nominal Voltage (V)	RATED CAPACITY					MAXIMUM CHARGING CURRENT (A)	CHARGING VOLTAGE		DIMENSIONS				WEIGHT APPROX. KGS.	TERMINAL TYPE
		20HR 1.75 V CELL	10HR 1.75 V CELL	5HR 1.70 V CELL	3HR 1.60 V CELL	1HR 1.60 V CELL		STAND BY USE V	CYCLE USE (V)	LENGTH	WIDTH	HEIGHT	TOTAL HEIGHT		
ES 7-12	12	7	6.5	6	5.5	4.35	1.7	13.50 TO 13.80 V at 20(°C) (68 °F)	14.4 TO 15 V at 20(°C) (68 °F)	151	65	94	99	2.40	FP-01
ES 12-12	12	12	11.20	10.5	9.45	7.90	3			152	98	95	101	4.05	FP-01
ES18-12	12	18	16.7	15.3	13.9	11.8	4.5			181	76	167	167	5.80	FP-02/RT01
ES 26-12	12	26	24	22.1	19.5	15.8	6.5			166	175	125	125	9.10	FP-02/RT01
ES 42-12	12	42	39	35.0	32.5	25.2	10.5			196	165	170	170	14.44	RT-02
ES 65-12	12	65	60.5	58	50	41	16			350	166	179	183	23.30	RT-02

SPECIFICATIONS OF ESC BATTERIES

SPECIFICATIONS OF ESC BATTERIES

ESC 100-12	12	100	95	85	78	65	25	13.50 TO 13.80 V at 20(°C) (68 °F)	14.4 TO 15 V at 20(°C) (68 °F)	329	172	214	221	32.80	RT-02
ESC 120-12	12	120	111.5	102	90	74	30			410	176	227	227	38.00	RT-03
ESC 150-12	12	150	140	129.5	121	97	37.5			485	172	240	240	46.00	RT-03
ESC 200-12	12	200	187	172	160	128	50			522	238	218	223	65.00	RT-03

Specific Capacity requirement can be produced on request for bulk quantity .



ES/ESC ROCKET

ES/ESC ROCKET BATTERY DISCHARGE TABLE

Constant CURRENT Discharge table: Amperes/Block Cut of Voltage: 1.60V/Cell

TYPE	MINUTES			HOURS				
	10	15	30	1.0	3.0	5.0	10.0	20.0
ES 7 12	18.10	14.00	8.07	4.35	1.85	1.22	0.71	0.38
ES 12 12	30.00	23.00	13.30	7.90	3.15	2.10	1.20	0.63
ES 18 12	44.00	34.15	20.15	11.80	4.65	3.13	1.80	0.93
ES 26 12	55.00	44.00	28.00	15.90	6.70	4.30	2.44	1.28
ES 42 12	92.00	70.30	43.92	26.13	10.86	7.18	4.00	2.10
ES 65 12	155.30	119.00	70.20	43.40	17.06	12.57	6.10	3.32
ESC 100 12	211.00	167.00	105.00	65.31	27.03	17.89	9.88	5.22
ESC 120 12	255.00	205.00	122.00	74.40	30.00	20.40	11.25	6.15
ESC 150 12	311.00	254.00	159.00	97.97	40.55	26.83	14.35	7.70
ESC 200 12	410.00	325.00	206.00	128.02	54.07	35.78	19.00	10.20

Constant CURRENT Discharge table: Amperes/Block Cut of Voltage: 1.67V/Cell

TYPE	MINUTES			HOURS				
	10	15	30	1.0	3.0	5.0	10.0	20.0
ES 7 12	17.80	13.75	7.51	4.30	1.82	1.21	0.70	0.37
ES 12 12	29.00	22.00	13.04	7.78	3.10	2.07	1.18	0.62
ES 18 12	43.00	34.01	19.50	11.70	4.63	3.12	1.76	0.92
ES 26 12	53.00	43.00	27.10	15.80	6.60	4.12	2.43	1.26
ES 42 12	87.40	67.49	42.60	25.34	10.64	7.04	3.99	2.05
ES 65 12	145.35	114.24	68.09	42.10	16.72	12.32	6.09	3.30
ESC 100 12	200.45	160.32	101.85	63.36	26.49	17.53	9.84	5.15
ESC 120 12	246.00	192.00	121.70	73.50	29.00	20.20	11.23	6.10
ESC 150 12	295.45	243.84	154.23	95.03	39.74	26.30	14.20	7.65
ESC 200 12	400.10	305.56	199.82	124.18	52.99	35.06	18.90	10.15

Constant CURRENT Discharge table: Amperes/Block Cut of Voltage: 1.70V/Cell

TYPE	MINUTES			HOURS				
	10	15	30	1.0	3.0	5.0	10.0	20.0
ES 7 12	17.3	13.20	7.47	4.25	1.80	1.20	0.68	0.36
ES 12 12	28.50	22.01	12.55	7.70	3.06	2.05	1.14	0.61
ES 18 12	42.00	33.00	19.30	11.35	4.60	3.08	1.72	0.91
ES 26 12	52.10	42.20	27.00	15.70	6.50	4.05	2.42	1.26
ES 42 12	83.03	64.38	40.98	24.61	10.33	6.93	3.95	2.02
ES 65 12	138.08	108.98	65.51	40.88	16.38	12.14	6.08	3.29
ESC 100 12	190.43	152.95	97.98	61.52	25.96	17.27	9.80	5.10
ESC 120 12	238.00	185.00	120.05	72.50	28.50	20.10	11.21	6.05
ESC 150 12	280.68	232.62	148.37	92.28	38.95	25.90	14.10	7.60
ESC 200 12	380.56	295.83	192.23	120.58	51.93	34.54	18.80	10.10

Constant CURRENT Discharge table: Amperes/Block Cut of Voltage: 1.75V/Cell

TYPE	MINUTES			HOURS				
	10	15	30	1.0	3.0	5.0	10.0	20.0
ES 7 12	16.00	11.59	7.35	4.22	1.77	1.19	0.66	0.35
ES 12 12	27.00	19.20	12.25	7.20	3.02	2.04	1.12	0.60
ES 18 12	40.10	29.00	18.23	11.10	4.42	3.06	1.66	0.90
ES 26 12	51.00	41.30	26.00	15.50	6.40	4.01	2.41	1.26
ES 42 12	78.46	61.29	39.34	23.75	10.11	6.80	3.90	2.00
ES 65 12	130.49	103.75	62.89	39.45	15.89	11.89	6.07	3.25
ESC 100 12	179.95	145.60	95.06	59.37	25.19	16.92	9.71	5.05
ESC 120 12	229.00	178.00	120.00	72.00	28.20	20.05	11.20	6.02
ESC 150 12	265.24	221.46	145.43	89.05	37.78	25.38	14.00	7.55
ESC 200 12	375.50	290.15	190.00	116.36	50.37	33.85	18.70	10.05

Constant CURRENT Discharge table: Amperes/Block Cut of Voltage: 1.80V/Cell

TYPE	MINUTES			HOURS				
	10	15	30	1.0	3.0	5.0	10.0	20.0
ES 7 12	15.00	11.00	7.04	4.20	1.75	1.18	0.65	0.34
ES 12 12	25.10	18.00	12.00	7.15	2.95	2.03	1.10	0.59
ES 18 12	38.00	27.05	18.00	11.00	4.40	3.04	1.65	0.89
ES 26 12	49.20	40.00	25.50	15.10	6.20	3.95	2.40	1.25
ES 42 12	74.15	58.23	37.77	23.03	9.91	6.69	3.89	1.98
ES 65 12	123.31	98.57	60.37	38.26	15.58	11.72	6.05	3.33
ESC 100 12	170.06	138.32	90.30	57.58	24.68	16.67	9.70	5.00
ESC 120 12	220.00	171.00	116.00	70.00	26.10	19.50	11.17	6.00
ESC 150 12	250.65	210.38	136.74	86.38	37.02	25.00	13.95	7.50
ESC 200 12	360.49	270.60	185.16	115.06	49.36	33.34	18.65	10.00

ES/ESC ROCKET

Constant POWER Discharge table: Watts/Cell Cut of Voltage: 1.60V/Cell

TYPE	MINUTES			HOURS				
	10	15	30	1.0	3.0	5.0	10.0	20.0
ES 7 12	30.02	23.50	14.50	8.75	3.70	2.45	1.30	0.71
ES 12 12	51.05	39.04	24.50	14.40	6.25	4.15	2.20	1.20
ES 18 12	77.10	58.02	36.00	21.80	9.38	6.20	3.30	1.80
ES 26 12	98.00	80.40	51.00	30.50	12.00	8.00	4.60	2.45
ES 42 12	171.12	131.46	84.10	48.48	21.00	14.05	7.40	4.00
ES 65 12	284.58	222.53	134.43	80.53	34.12	22.40	12.20	6.88
ESC 100 12	392.46	312.29	201.08	121.19	51.07	34.14	18.00	10.05
ESC 120 12	482.20	380.00	237.00	141.04	60.50	40.00	21.50	12.10
ESC 150 12	578.46	474.98	304.49	181.79	78.10	52.20	27.10	15.77
ESC 200 12	725.24	581.57	394.49	237.53	103.14	68.27	37.00	21.59

Constant POWER Discharge table: Watts/Cell Cut of Voltage: 1.67V/Cell

TYPE	MINUTES			HOURS				
	10	15	30	1.0	3.0	5.0	10.0	20.0
ES 7 12	29.30	23.50	14.20	8.70	3.64	2.41	1.29	0.705
ES 12 12	49.10	38.10	24.15	14.30	6.10	4.10	2.19	1.19
ES 18 12	73.50	57.60	35.50	22.60	9.25	6.10	3.29	1.79
ES 26 12	96.90	78.80	50.05	30.01	12.00	8.00	4.58	2.44
ES 42 12	164.31	127.55	82.65	48.00	20.09	13.29	7.20	3.95
ES 65 12	273.26	215.91	132.10	78.78	33.60	22.01	12.19	6.87
ESC 100 12	376.85	303.00	197.59	116.08	50.25	33.59	17.90	10.03
ESC 120 12	464.14	380.00	228.00	135.00	59.00	39.90	21.40	12.04
ESC 150 12	555.45	460.86	299.21	180.12	76.88	51.38	27.00	15.74
ESC 200 12	697.82	564.28	387.65	227.11	100.51	68.18	36.00	21.50

Constant POWER Discharge table: Watts/Cell Cut of Voltage: 1.70V/Cell

TYPE	MINUTES			HOURS				
	10	15	30	1.0	3.0	5.0	10.0	20.0
ES 7 12	29.00	23.35	14.10	8.65	3.60	2.36	1.28	0.70
ES 12 12	48.20	38.05	24.05	14.05	6.08	4.00	2.18	1.19
ES 18 12	67.00	57.20	35.00	21.05	9.10	6.00	3.26	1.78
ES 26 12	96.10	78.20	50.00	30.00	12.00	8.00	4.55	2.42
ES 42 12	156.93	122.33	79.51	47.98	20.06	13.08	7.18	3.93
ES 65 12	260.98	207.07	127.08	77.71	32.93	22.09	12.18	6.80
ESC 100 12	359.91	290.60	190.08	110.96	49.10	33.09	17.85	10.02
ESC 120 12	460.80	363.00	220.00	120.00	58.00	39.80	21.00	12.02
ESC 150 12	530.48	441.90	287.84	179.94	76.28	51.18	27.00	15.64
ESC 200 12	675.00	541.17	372.92	225.12	97.12	67.11	36.00	21.42

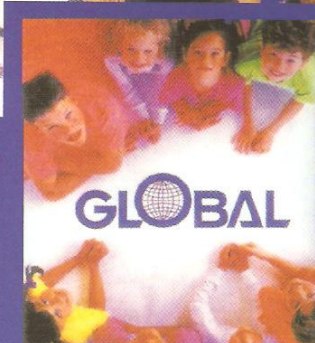
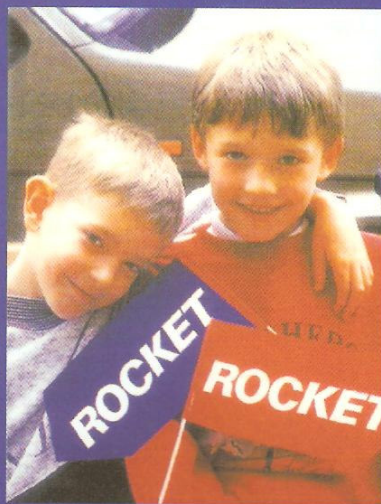
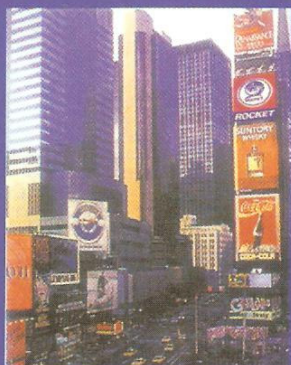
Constant POWER Discharge table: Watts/Cell Cut of Voltage: 1.75V/Cell

TYPE	MINUTES			HOURS				
	10	15	30	1.0	3.0	5.0	10.0	20.0
ES 7 12	27.00	22.00	14.00	8.55	3.50	2.30	1.28	0.70
ES 12 12	48.10	37.00	23.50	14.00	5.90	3.90	2.17	1.19
ES 18 12	66.05	55.15	34.00	21.00	8.85	5.85	3.22	1.77
ES 26 12	94.20	76.50	49.00	29.10	11.90	7.95	4.53	2.36
ES 42 12	148.30	116.46	76.33	47.37	20.33	12.86	7.16	3.90
ES 65 12	246.62	197.13	122.00	76.70	31.94	22.06	12.14	6.72
ESC 100 12	340.11	276.65	182.48	108.43	48.10	32.52	17.50	10.00
ESC 120 12	422.50	345.00	215.00	116.00	57.05	38.90	21.00	12.00
ESC 150 12	501.30	420.77	276.32	177.65	73.93	50.08	26.80	15.60
ESC 200 12	650.97	515.19	358.00	222.13	95.24	67.00	35.85	21.25

Constant POWER Discharge table: Watts/Cell Cut of Voltage: 1.80V/Cell

TYPE	MINUTES			HOURS				
	10	15	30	1.0	3.0	5.0	10.0	20.0
ES 7 12	25.10	21.00	13.90	8.41	3.38	2.22	1.27	0.70
ES 12 12	42.00	35.00	23.20	14.00	5.85	3.75	2.16	1.19
ES 18 12	63.05	52.13	33.50	21.00	8.61	5.61	3.21	1.77
ES 26 12	90.10	70.10	48.50	28.70	11.80	7.93	4.51	2.34
ES 42 12	138.62	112.62	74.41	46.07	19.02	12.52	7.16	3.89
ES 65 12	230.52	190.23	118.93	76.53	31.31	21.60	12.10	6.70
ESC 100 12	324.81	266.96	177.89	105.17	47.00	31.67	17.40	10.00
ESC 120 12	401.52	335.00	210.00	115.00	56.00	34.74	21.00	11.97
ESC 150 12	478.75	406.05	269.37	172.75	74.41	50.51	26.83	15.58
ESC 200 12	625.12	497.16	349.00	220.73	94.60	65.40	35.80	21.20

Up to 235 Ah can be produced up on customer request.



Global Battery Co., Ltd.

(Formerly Global & Yuasa Co., Ltd., South Korea)

C-10, Satyam Shopping Centre, M.G. Road, Ghatkopar (E), Mumbai - 400 077(India).

Tel: +91-22-2511 0646, 2511 7469 Fax: +91-22-2511 1042

E-mail : info@rocketbatteries.net Website : www.rocketbatteries.net